

\$150,000 - 4450 Oyster Shell Drive, CAPTIVA

MLS® #222078159

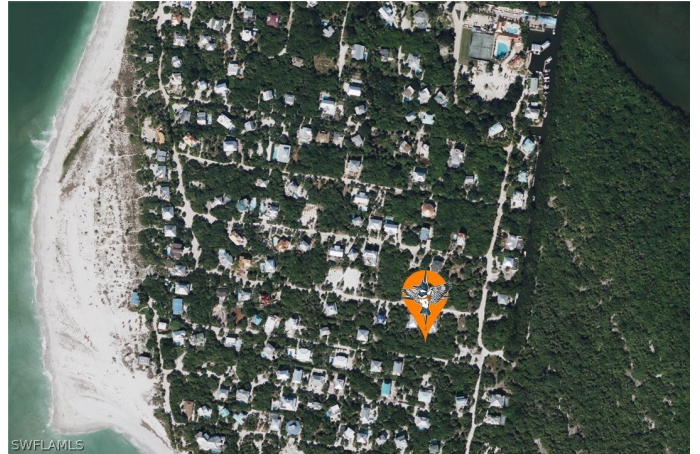
\$150,000

0 Bedroom, 0.00 Bathroom,
Land on 0 Acres

NORTH CAPTIVA DUNES, CAPTIVA, FL

Amazing opportunity to build your dream vacation paradise. Arrive by sea or air to your private home in Upper Captiva island. Just steps away to multiple beach access areas and an abundance of preserve land to explore.

This piece of paradise will afford a perfect setting for nature enthusiasts.



Essential Information

MLS® #	222078159
Price	\$150,000
HOA Fees	0.00
Bathrooms	0.00
Acres	0.20
Type	Land
Sub-Type	Acreage
Status	Active

Community Information

Address	4450 Oyster Shell Drive
Area	CI02 - Upper Captiva Island
Subdivision	NORTH CAPTIVA DUNES
City	CAPTIVA
County	Lee
State	FL
Zip Code	33924

Amenities

Utilities	None, Sewer Not Available, Water Not Available
-----------	--

Features	Rectangular Lot, See Remarks, Acreage
View	Gulf, Partial
Waterfront	None

Exterior

Lot Description	Rectangular Lot, See Remarks, Acreage
-----------------	---------------------------------------

Additional Information

Date Listed	October 28th, 2022
Zoning	RS-1

Listing Details

Listing Office	Kingfisher Real Estate, Inc.
----------------	------------------------------